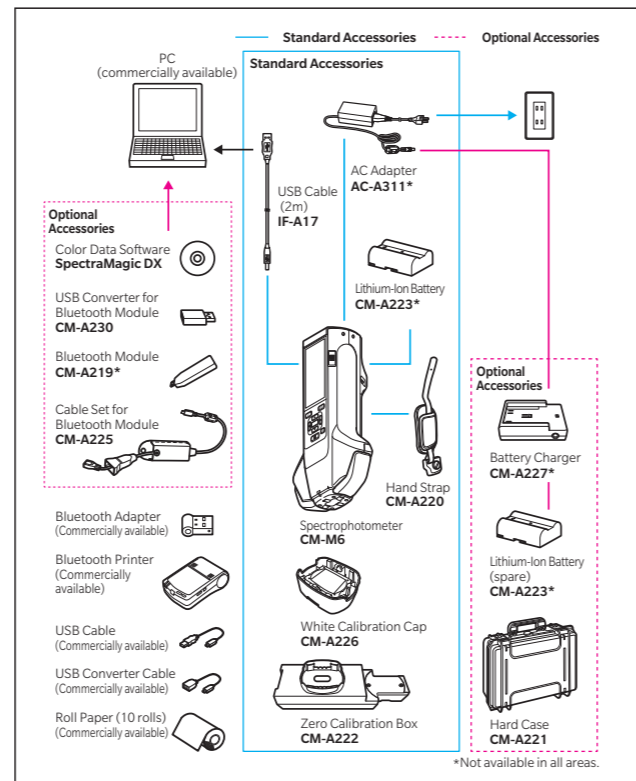


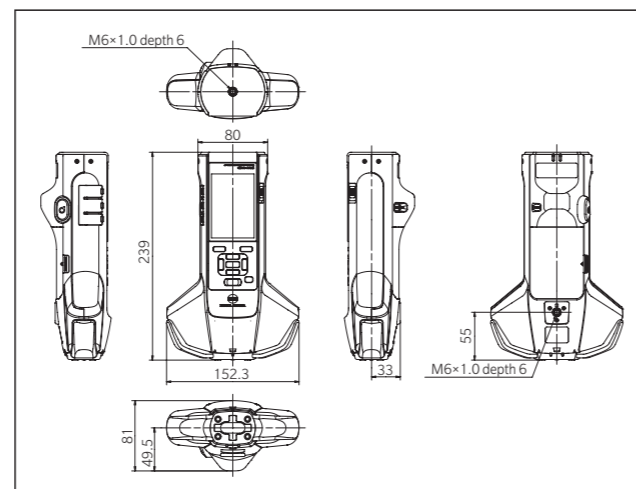
Main Specifications

| Model | Spectrophotometer CM-M6 |
|--------------------------------------|--|
| Illumination/viewing system | 45° illumination : -15°/15°/25°/45°/75°/110° aspecular viewing angles with double-path technology |
| Detector | Dual 40-element silicon photodiode arrays |
| Spectral separation device | Linear variable filter |
| Wavelength range | 400-700 nm |
| Wavelength pitch | 10 nm |
| Measurement range | 6 angles: 0-600%; Output/display resolution :0.01 % |
| Light source | High-CRI white LED |
| Measurement time | Approx. 4.5 seconds |
| Minimum measurement interval | Approx. 5 seconds |
| Battery performance | Approx. 1,500 measurements/charge (at 10-second intervals at 23°C) |
| Measurement/illumination area | Ø6 mm/Ø12 mm |
| Repeatability | Chromaticity value :Standard deviation within ΔE^*ab 0.05 (When a white calibration plate is measured 30 times at 10-second intervals after white calibration) |
| Inter-instrument agreement | Within ΔE^*ab 0.2 (Typical) (Based on 12 BCRA Series II color tiles compared to values measured with a master body under Konica Minolta standard measurement conditions) |
| Observer | 2° or 10° Standard Observer |
| Illuminant | A, C, D50, D65, F2, F6, F7, F8, F10, F11, F12 (simultaneous evaluation with two illuminants possible) |
| Displayed data | Colorimetric values, color-difference values/graph, line graph (colorimetric/color-difference values), pass/fail judgement |
| Colorimetric data | $L^*a^*b^*$, L^*C^*h |
| Indexes | MI, FF value (Flop value) |
| Color-difference formula | ΔE^*ab (CIE 1976), $\Delta(L^*a^*b^*)$, $\Delta(L^*C^*H^*)$, CMC (1:c), ΔE^*94 (CIE 1994), $\Delta E00$ (CIE DE2000), ΔE (DIN 6175) |
| Data memory | Target data: 200 measurements; Sample data: 800 measurements |
| Pass/Fail judgement | Tolerances can be set for color-difference values |
| Displayed languages | Japanese, English, German, French, Italian, Spanish, Chinese (Simplified), Portuguese, Russian, Turkish, Polish |
| Display | 3.5-inch TFT color LCD |
| Interfaces | USB2.0, Bluetooth (Option) |
| Power | Rechargeable lithium-ion battery (removable), dedicated AC adapter |
| Charging time | Approx. 5 hours when no charge remains |
| Operation temperature/humidity range | 0-40 °C, relative humidity is 85% or less (at 35 °C) with no condensation |
| Storage temperature/humidity range | -20-45 °C, relative humidity is 85% or less (at 35 °C) with no condensation |
| Size (W×H×D) | Approx. 152 × 239 × 81 mm |
| Weight | Approx. 1.1 kg (Including battery) |

System Diagram



Dimensions (Units : mm)



- KONICA MINOLTA, the Konica Minolta logo and symbol mark, "Giving Shape to Ideas" and SpectraMagic are registered trademarks or trademarks of Konica Minolta, Inc.
- Bluetooth® is a registered trademark of Bluetooth SIG, Inc. and is used under license agreement.
- Displays shown are for illustration purpose only.
- The specifications and appearance shown herein are subject to change without notice.



NEW

Spectrophotometer

CM-M6

1

High precision, multi-angle model for measuring automotive exteriors from 6 angles!

Innovative "double-path optical system" enables stable measuring even on curved surfaces!

Compact, lightweight vertical format designed for measuring vehicle exteriors!

Ø6 mm diameter viewing beam for measuring small surfaces!



SAFETY PRECAUTIONS

For correct use and for your safety, be sure to read the instruction manual before using the instrument.

- Always connect the instrument to the specified power supply voltage. Improper connection may cause a fire or electric shock.
- Be sure to use the specified batteries. Using improper batteries may cause a fire or electric shock.



Certificate No : LRQ 0960094/A
Registration Date : March 3, 1995



Certificate No : JQA-E-80027
Registration Date : March 12, 1997

KONICA MINOLTA, INC.
Konica Minolta Sensing Americas, Inc.
Konica Minolta Sensing Europe B.V.

Osaka, Japan
New Jersey, U.S.A.
European Headquarter /BENELUX
German Office
French Office
UK Office
Italian Office
Swiss Office
Nordic Office
Polish Office
SE Sales Division
Beijing Office
Guangzhou Office
Chongqing Office
Qingdao Office
Wuhan Office

Phone : 888-473-2656 (in USA), 201-236-4300 (outside USA)
Nieuwegein, Netherlands
München, Germany
Roissy CDG, France
Warrington, United Kingdom
Cinisello Balsamo, Italy
Dietikon, Switzerland
Västra Frölunda, Sweden
Wrocław, Poland
Shanghai, China
Beijing, China
Guangdong, China
Chongqing, China
Shandong, China
Hubei, China
Singapore
Goyang-si, Korea

Phone : +31 (0)30 248-1193
Phone : +49 (0)89 4357 156 0
Phone : +33 (0)1 80 11 10 70
Phone : +44 (0)1925 467300
Phone : +39 02849488.00
Phone : +41 (0)43 322-9800
Phone : +46 (0)31 7099464
Phone : +48 (0)71 73452-11
Phone : +86- (0)21-5489 0202
Phone : +86- (0)10-8522 1551
Phone : +86- (0)20-3826 4220
Phone : +86- (0)23-6773 4988
Phone : +86- (0)532-8079 1871
Phone : +86- (0)27-8544 9942
Phone : +65 6563-5533
Phone : +82 (0)2-523-9726

Fax : 201-785-2482
Fax : +31 (0)30 248-1280
Fax : +49 (0)89 4357 156 99
Fax : +33 (0)1 80 11 10 82
Fax : +44 (0)1925 711143
Fax : +39 02849488.30
Fax : +41 (0)43 322-9809
Fax : +48 (0)71 734 52 10
Fax : +86- (0)21-5489 0005
Fax : +86- (0)10-8522 1241
Fax : +86- (0)20-3826 4223
Fax : +86- (0)23-6773 4799
Fax : +86- (0)532-8079 1873
Fax : +86- (0)27-8544 9991
Fax : +65 6560-9721
Fax : +82 (0)31-995-6511

Konica Minolta (CHINA) Investment Ltd.

Konica Minolta Sensing Singapore Pte Ltd.
Konica Minolta Sensing Korea Co., Ltd.

Addresses and telephone/fax numbers are subject to change without notice. For the latest contact information, please refer to the KONICA MINOLTA Worldwide Offices web page :

©2016 KONICA MINOLTA, INC.

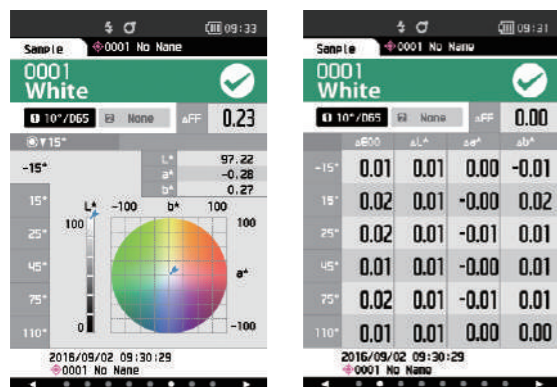
<http://konicaminolta.com/instruments/network>

9242-4843-20 BGJPK Printed in Japan

The Standard in Measuring Color & Light

Giving Shape to Ideas

Display examples

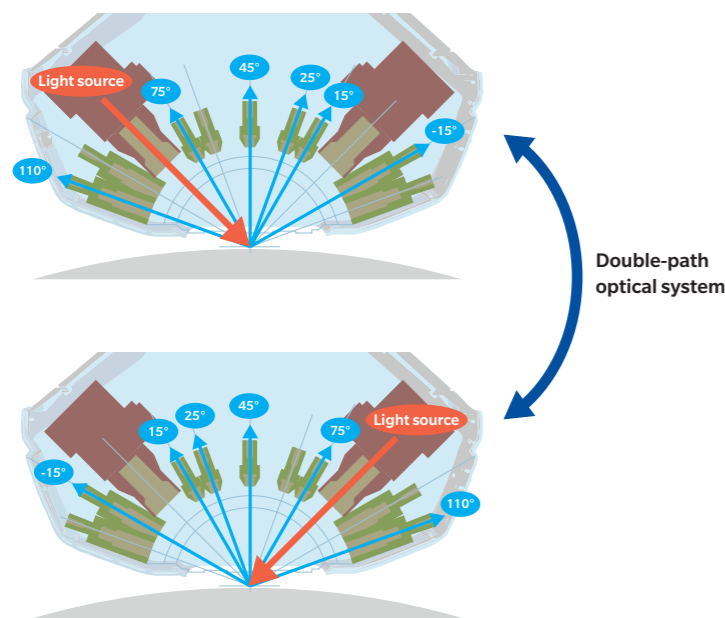


The CM-M6 has a built-in 3.5-inch color LCD that can display measured values both numerically and on colored graphs, for easier visualization of results.

The CM-M6 is a compact, lightweight, multi-angle spectrophotometer. Incorporating a new patented 'double-path optical system', it exhibits outstanding versatility in measuring automotive exteriors.



Multi-angle measurements (1 light source, 6 viewing angles)



Double-path optical system

Illumination angle: 45°

Aspecular viewing angles: -15°, 15°, 25°, 45°, 75°, 110°

* These 6 viewing angles make it possible to detect metallic and pearl colors with higher accuracy than previous spectrophotometers.

Double-path optical system

The CM-M6 has duplicate illumination/viewing systems symmetrical about its center axis. This system ensures high measuring stability even when the colorimeter is slightly tilted and makes it possible to stably measure R300 curved surfaces like side mirrors.

Compact, lightweight, vertical format



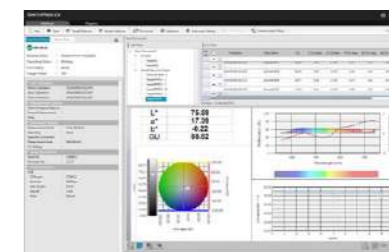
The compact body (with hand strap) can be stably held with one or two hands. Moreover, it is loaded with features ideal for measuring vehicle exteriors such as a rubber cover around the measurement aperture to safeguard measurement subjects against scratching and Bluetooth® support (option) for sending measurement data to remote devices over wireless connections.

Ø6 mm diameter viewing beam for measuring small surfaces



The viewing beam is 6 mm in diameter, so small surfaces that were hard to measure with earlier models can be stably measured.

Color Data Software SpectraMagic DX (Option) Professional Edition (Version. 1.0) Lite Edition



The new Color Data Software SpectraMagic DX enables easy management of data measured with the CM-M6, and offers a new Instrument Diagnosis function to help ensure continued high instrument performance.

- OS : Windows® 7 Pro 32-bit / 64-bit, Windows® 8.1 Pro 32-bit / 64-bit, Windows® 10 Pro 32-bit / 64-bit
- CPU : Intel® Core i5 2.7GHz or higher (recommended)
- Memory : At least 2 GB (4 GB or more recommended)
- Hard disk : 20 GB of available hard disk space
At least 10 GB of available disk space is required on the system drive (drive where the OS is installed) for database.
- Display : Display hardware capable of displaying 1,280 x 768 pixels/16-bit color or better
- Other : Two USB ports required for protection key if used. Not necessary for electronic license.
USB or serial port required for connection to instrument.
- Compatible Instruments : CM-25cG, CM-M6, CM-2500c

• Windows® is a trademark or registered trademark of Microsoft Corporation in the USA and other countries.
• Intel® Core is a trademark or registered trademark of Intel Corporation in the USA and other countries.